

FSC Bursary Fund

To check your student's eligibility for support from FSC Bursary Fund you need to use your home country's national deprivation statistics. Here is the guidance for how to do this – it is different for each of the home countries. At present there is only a tool to enter groups of postcodes for England so for the other countries postcode needs to enter individually. This doesn't take as long as you think – you can check 30 postcodes in about 20 minutes!

ENGLAND

FSC Bursaries are awarded to schools that have individuals within their groups who are unable to attend a residential or day course at an FSC Centre due to disadvantage. We aim to support young people who come from the 10.00% most deprived areas of the UK. Indices of Multiple Deprivation will be used as an indicator of deprivation. Data from the most recent source will be used and for England this is the Ministry of Housing, Communities and Local Government data in 2019 which uses the small areas (called LSOAs – lower super output areas) which have populations of about 1500 people. There are 32,844 LSOAs in England. The deprivation figures take into account a wide range of disadvantage measures (income, employment, health, education, housing, crime levels and environment) and are widely accepted as the best available method of identifying disadvantage at a 'fine level'.

How to Check Student Eligibility

1. Go to: <http://imd-by-postcode.opendatacommunities.org/imd/2019>
2. Enter postcodes in a list, or upload postcodes from a file
3. Select 'Get Deprivation Data'
4. Download results in xlsx (Excel)
5. Look at the data on column E which is the Index of Multiple Deprivation Rank and divide this rank figure by 32,844 to create the IMD rank %.

(There are 32,844 data areas in England so in order to establish whether this postcode is in the 10% most deprived area of England divide the IMD rank by 32,844 and multiply by 100.)

Examples:

Postcode SY5 8LJ connects to an IMD Rank of 15343

$$\frac{15343}{32,844} \times 100 = 46.71\%$$

32,844

SY5 8LJ *would not* be eligible for FSC Bursary support.

Postcode E1 5NJ connects to an IMD rank of 2409

$$\frac{2409}{32844} \times 100 = 07.33\%$$

32844

Postcode E1 5NJ *would* be eligible for FSC Bursary support.

WALES

FSC Bursaries are awarded to schools that have individuals within their groups who are unable to attend a residential or day course at an FSC Centre due to disadvantage. We aim to support young people who come from the 10.00% most deprived areas of the UK. Indices of Multiple Deprivation will be used as an indicator of deprivation. Data from the most recent source will be used and for Wales this is from Statistics Wales WIMD data 2014 figures which uses the small areas (called LSOAs – lower super output areas) which have populations of about 1600 people. There are 1909 LSOAs in Wales. The deprivation figures take into account a wide range of disadvantage measures (income, employment, health, education, housing, crime

levels and environment) and are widely accepted as the best available method of identifying disadvantage at a 'fine level'.

How to Check Student Eligibility

You can check if your students are eligible for consideration for an FSC Bursary by visiting <http://www.infobasecymru.net/IAS/eng>

Enter postcode to get a Local Area report

The following statement is included in the overview statement within the report:

*The area is ranked **179** in the Welsh Index of Multiple Deprivation (WIMD) 2014. WIMD is a measure of multiple deprivation at small area level. Each LSOA in Wales has been given a score and ranked in order of deprivation. A rank of 1 would be the most deprived LSOA in Wales, and a rank of 1909, would be the least deprived LSOA in Wales.*

The FSC Bursary Fund will consider offering financial support to students with individual postcodes which fall within the 10% most deprived areas of Wales. You need to change the Deprivation rank figure found in the Local Area Report to a % figure

For example

Rank $\frac{179}{1909} \times 100 = 9.376\%$ This student would be eligible for support from FSC Bursary Fund.

Rank $\frac{218}{1909} \times 100 = 11.41\%$ This student would not be eligible for support from the FSC Bursary Fund.

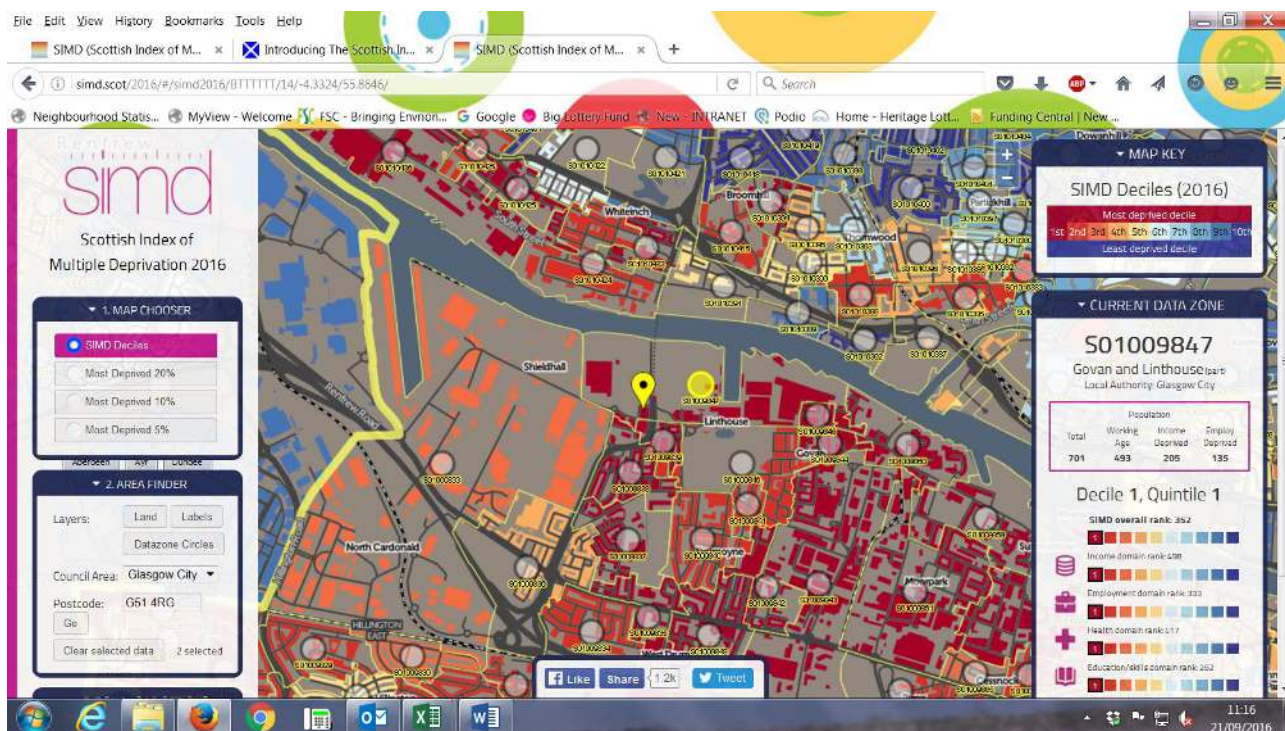
SCOTLAND

FSC Bursaries are awarded to schools that have individuals within their groups who are unable to attend a residential or day course at an FSC Centre due to disadvantage. We aim to support young people who come from the 10.00% most deprived areas of the UK. Indices of Multiple Deprivation will be used as an indicator of deprivation. Data from the most recent source will be used and for Scotland this is the Scottish Government 2016 multiple deprivation indices which uses small areas (called Data Zones - DZ) which have populations of about 800 people. There are 6976 DZs in Scotland. The deprivation figures take into account a wide range of disadvantage measures (income, employment, health, education, housing, crime levels and environment) and are widely accepted as the best available method of identifying disadvantage at a 'fine level'.

How to Check Student Eligibility

You can check if your students are eligible for consideration for an FSC Bursary by visiting <http://simd.scot/2016/#/simd2016/BTTTTT/14/-3.5674/56.0854/>

Use the Council Area to select your location and the postcode box to end your postcode and press 'Go'. A yellow marker will appear on the map to indicate the location of the postcode. Hover over the yellow marker – this will then show the data for that DataZone in a column on the right of the map. In order to attract FSC Bursary funding you need the postcode to be in Decile 1 which is the same as saying in the lowest 10%. The overall SIMD figure needs to fall below 697.



eg Postcode G51 4RG has an SIMD rank of 352

$352/6976 = 0.0504 \times 100 = 5.047\%$. This postcode would be eligible for FSC Bursary support.

eg Postcode G12 0HP has an IMD rank of 4380

$4380/6505 = 0.6278 \times 100 = 62.78\%$. This postcode would be NOT eligible for FSC Bursary support.

NORTHERN IRELAND

FSC Bursaries are awarded to schools that have individuals within their groups who are unable to attend a residential or day course at an FSC Centre due to disadvantage. We aim to support young people who come from the 10.00% most deprived areas of the UK. Indices of Multiple Deprivation will be used as an indicator of deprivation. Data from the most recent source will be used and for Northern Ireland this is the NI Statistics and Research Agency deprivation indices 2010 which uses the small areas (called SOAs –super output areas) which have populations of about 1900 people. There are 890 SOAs in Northern Ireland. The deprivation figures take into account a wide range of disadvantage measures (income, employment, health, education, housing, crime levels and environment) and are widely accepted as the best available method of identifying disadvantage at a ‘fine level’.

How to Check Student Eligibility

You can check if your students are eligible for consideration for an FSC Bursary by visiting

http://www.ninis.nisra.gov.uk/mapxtreme_deprivation2005/default.asp

Enter postcode to get quick access to an Area Profile

The profile report will give the area a rank score which will look like this example below:

*On the Multiple Deprivation Measure **Shaftesbury 1** SOA has an overall rank of 40 out of 890 Super Output Areas. All SOAs in Northern Ireland are ranked, 1 being the most deprived and 890 the least deprived.*

***Shaftesbury 1**'s rank of 40 is illustrated on the line diagram below. SOAs with ranks of 89 or less are in the top 10% of the most deprived SOAs in NI, this means **Shaftesbury 1**, with a rank of 40, is within the top 10% most deprived SOAs.*

The FSC Bursary Fund will consider offering financial support to students with individual postcodes which fall within the 10% most deprived areas of Northern Ireland. You need to change the Deprivation rank figure found in the Area Profile to a % figure

For example:

Rank $\frac{40}{890} \times 100 = 4.49\%$ This student would be eligible for support from the FSC Bursary Fund.

REPUBLIC OF IRELAND

FSC Bursaries are awarded to schools that have individuals within their groups who are unable to attend a residential or day course at an FSC Centre due to disadvantage. We aim to support young people who come from the 10.00% most deprived areas of the UK and RoI. Measures of Multiple Deprivation will be used as an indicator of deprivation. Data from the most recent source will be used and for the Republic of Ireland the 2006 Hasse and Pratschke Absolute Index Scores for each Electoral District (ED) are used. The deprivation figures take into account a wide range of disadvantage measures (income, employment, health, education, housing, crime levels and environment) and are widely accepted as the best available method of identifying disadvantage at a 'fine level'.

How to Check Student Eligibility

You can check if your students are eligible for consideration for an FSC Bursary by visiting <https://www.pobal.ie/WhatWeDo/Deprivation/Pages/AreaProfiles.aspx>

Click on the relevant county name.

The County report will indicate in words the level of deprivation for the county in comparison to the country and will name the most deprived electoral districts in the county.

The data file will give a figure of deprivation with the Absolute Index Score 2006 being the most recent summary figure. The range is from -50 most deprived to +50 most affluent.

The FSC Bursary fund will consider supporting students from EDs which are extremely or very disadvantaged and which score between -25 and -50 in the ACFS06 (Absolute Index Score 2006) column.

Any queries for all geographical areas please contact
Jennie Comerford 01743 852100 or email jennie@field-studies-council.org