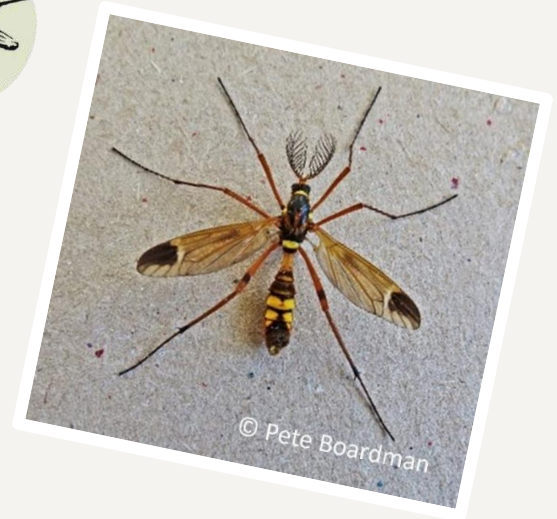




Field Studies Council



BioLinks and the Cranefly Recording Scheme are asking you to help collect data, so we can better understand which crane fly species are attracted to light traps.

What do we need?

We are working to increase the number of crane fly records in the UK, especially for species that are attracted to light. If you are using light traps and come across crane flies, we would like your specimens to be identified and added to the Cranefly Recording Scheme. You can find information and useful resources here: www.dipterists.org.uk/crane-fly-scheme/home

If you are unable to identify your specimens, please send them to us following our guidelines below and we will identify them for you:

1. Put the crane flies into pots and place them in the freezer for 48 hours.
2. Remove them from the freezer and place them on a piece of kitchen roll for a few hours - this allows them to dry out (and prevents them from going mouldy in the post).
3. If you have several specimens to send us, please ensure that they are separated out into samples consisting of the same capture date and trap type. Then, place the crane flies in small paper envelopes and label with the date, location, and trap type.
4. Fill out a survey sheet to correspond with your samples. This needs to be one sheet per sample which you can download here: www.fscbiodiversity.uk/blog/crane-flies-light-project
5. Pop all your crane flies (and your completed survey sheet) into an appropriately sized padded envelope or a large letter sized postal box and send to: FAO BioLinks, FSC Bishops Wood, Crossway Green, Stourport-on-Severn, DY13 9SE

What will we do with the specimens?

We will identify all specimens to species level and submit all records onto iRecord. We will also send you an email with a species list for the specimens you send us. Please ensure all specimens have been sent to us by the 31st of December 2022.



Scan the QR code to get involved



@FSCBioLinks @CRStipula

#CraneFliesToLight

www.fscbiodiversity.co.uk