

“Fantastic access to both the coastline of Morecambe Bay and the glaciated uplands of the Lake District”

 **Field Studies**
Council
Castle Head

Castle Head is an impressive Georgian house situated in 20 hectares of extensive private grounds in beautiful south Cumbria between the coast of Morecambe Bay and the Lake District National Park. The Centre is easily accessible by both road and rail.

There is easy access to both the coastline of Morecambe Bay, the glaciated uplands of the southern Lake District and the lakes of Windermere and Coniston; Castle Head is ideally situated for a wide range of both field studies and adventurous activities.

All types of bookings are welcome including adult groups, families and extended family groups. However, please note that we do not accept stag or hen parties. Groups have the option to book a fully catered stay or it is possible to rent out the whole centre on a self-catering basis.

During off-peak season - Receive 25% discount off total price if using Hillfoot wing only (includes self-cater kitchen, Chapel & Hillfoot Common Room). Total capacity of Hillfoot wing = 110 beds. (inc 6 en-suite rooms). With this deal, there will be no access to the Main House wing at all).



Hire the whole centre

- Suitable for activity clubs, large gatherings or faith groups
- Self-catering offered.
- Bed linen, classrooms and common rooms included
- Catering and activities available on request (chargeable)

[View our virtual tour of the centre](#)

Buildings	2. Main House (Wilkinson) sleeps 49 and (Hillfoot Wing) sleeps 113
No. of floors	3
Bed capacity	162 comfortably (169 total capacity)
No of bedrooms	33
Configuration	<p>Hillfoot 1st floor (15 bedrooms) – 1 Single en-suite, 3 Twin en-suite, 1 Triple, 7 Quad rooms, 3 five-bed rooms.</p> <p>Hillfoot Ground floor – (9 bedrooms) – 2 Twin en-suite, 1 twin accessible en-suite, 1 Quad, 5 ten-bed rooms</p> <p>Wilkinson 1st floor (5 bedrooms) – 1 Single, 1 Twin en-suite, 1 Quad, 2 eight-bed rooms</p> <p>Wilkinson 2nd floor – (4 bedrooms) – 1 Twin en-suite, 3 eight-bed rooms <i>(There is an option to add up to 7 additional camp beds to some of the rooms to maximise occupancy.)</i></p>
No of en-suites	9
Accessible rooms with wheelchair access	There is one twin bedroom (room 17) with wheelchair accessible bathroom and shower which can sleep up to two wheelchair users.
Accessible spaces/ Wheelchair access	The following areas are wheelchair accessible: The gym/sports hall, all classrooms, bottom floor of Hillfoot building, Hillfoot common room, drying rooms, dining hall. The Main House and Chapel are all upstairs and so not accessible. Although a wheelchair can technically access the above buildings, there are no ramps or access buttons to electronically open doors. The paths around the property are rough terrain and the grounds are accessible by an outdoor wheelchair with larger tyres capable of navigating a rough track and grass. General accessibility is quite limited.
Double beds	0
Linen	We do supply all linen but we do not provide a bed-making service for exclusive centre hire. Can all guests strip their beds upon departure to assist our hospitality teams.
Towels	We ask guests to bring their own towels.
Kitchen	Self-catering only offered to groups that hire out the whole centre. A large kitchen, with everything needed for a self-catering stay including 2 rationale ovens and induction hob. 20 litre cake-mixer, dishwasher, serving hatch with food warmers.

Dining capacity	The dining room can seat up to 96.
Games room/student lounge	Contains a range of games including Jenga, Connect 4, Table Tennis, and Table Football.
Adult lounge	Wilkinson house (seats around 40 people). Comfortable and cosy lounge area with open fire.
Common rooms	The Hillfoot Common Room (seats 60 people), The Chapel (comfortably seats around 80 people or 110 theatre style) The Mucklow Common Room (seats 30 conference style.)
Library	There is a very small library, often used as a small meeting room for up to eight people containing round table and chairs.
Conference suitable space	The largest conference room (The Chapel) can comfortably fit approx. 110 people theatre style with presentation facilities. Alternatively, up to 120 can fit in the gym/sports hall. The Chapel has an excellent projector and sound system for presentations and films. The Sports Hall has a mobile projector and screen the can be set up for 160 just seating only.
Drying room	2
Laundry facilities	No
Onsite shop/bar	Unfortuanly our shop and bar are closed to centre hire bookings.
Parking	A courtyard with hard parking space for approximately 30 cars, additional soft field parking can be opened (in dry weather) for big events. Large coaches are able to gain access to the centre. Double decker coaches can get down the driveway and turn around. They can either park in the layby on the driveway next to the car park (if staying overnight), or they can reverse into the carpark and turn around to leave. There is space for three 52 seater coaches.
Wifi	Free guest WIFI is available through-out the centre.
Bike storage	There is an open-sided bike shelter available.
Open fire inside	Yes in Wilkinson adult lounge. Firewood supplied at no additional cost.
Pets allowed	Well behaved dogs are welcome but must be kept well under control due to wildlife on-site.
Smoking	There is no smoking or vaping allowed anywhere except in designated areas outside. Smoking or Vaping indoors will set off the alarms.



Grounds	Castle Head is a Georgian house which sits in 20 hectares of private country grounds. There is a large front lawn, amphitheatre sloped back lawn, terraced garden and walk along the river. There is an outdoor covered veranda around the building. You will have access to all outdoor areas but not the high/low ropes or the watersports equipment, these are used for residential school groups only.
BBQ/firepit	There are two campfire areas. Firewood supplied at no additional cost.
Space for marquee	There are two flat lawn areas that could hold a marquee: 5m x 25m or 8m x 12m.
Commercial filming	Permitted.
Music/noise	Please keep noise to a minimum between 11pm and 7am.

Camping	Groups hiring the centre exclusively can camp in the gardens immediately surrounding the Centre building including the front lawn, side terrace, rear Amphitheatre lawn and high ropes field. The 'Orchard field' to the right hand side of the driveway is open for public camping from summer 2024. For groups hiring the centre exclusively, wishing to have exclusive access to that campsite there will be a charge of £100 inc VAT per day to close the field.
Class/work rooms & capacities	Humphrey Head (24 seated with tables) Whitbarrow (24 seated with tables) Eggerslack (24 seated with tables) Hampsfell (24 seated with tables) Mucklow (30 seated with tables) Hillfoot (60 seated with tables)



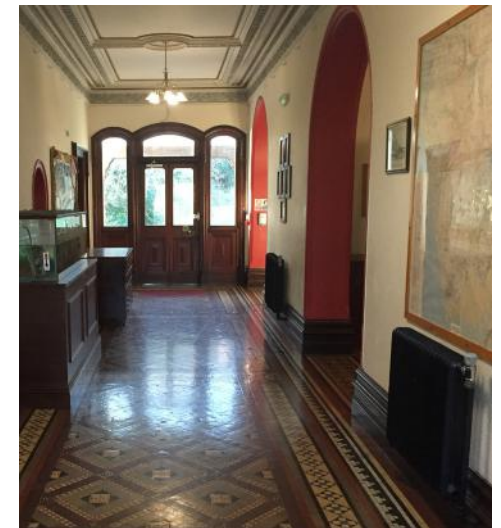
Dining hall



Bedroom



High ropes



Hallway

The local area

Grange-Over-Sands is 10 minutes by car where there are local shops and restaurants. Coastal access available at Morecambe Bay.

Nearest hospitals, doctors and pharmacy

Westmorland Hospital Kendal - 20 minute drive, urgent care unit open until 9pm daily.

Royal Lancaster Infirmary Lancaster = 40 minute drive. This is the nearest A&E open 24/7. Guests need to organise their own transport to hospital, either by taxi or ambulance.

Directions

By road - From Ulverston to Castle Head Field Centre: Follow the B5271 to Lindale village.

From M6 to Castle Head Field Centre: Exit the M6 at junction 36. Follow the A590 then the B5277. The postcode in the Satnav will take you to Lindale village. The centre is signposted off the B5277 just east of Lindale on a sharp bend. Castle Head centre is about ½ mile down the little lane – you will see the main house in front of you, follow the road round to the right and the car park will be on the left. If arriving by coach, once you arrive at the centre, due to limited turning area, it is easier to drive past the entrance to the car park and reverse in.

By train - The nearest (local) railway station is 1 mile away at Grange over Sands (5 minutes drive). It is connected to the main west coastline at Lancaster and Preston. Local taxis are available but need to be booked in advance as it's a rural area.

By bus - The X6 bus connects Ulverston with Lindale. National Express coaches connect with many parts of the country. Minimal public bus services that run past the centre

Staff

Some of our centres may have staff living on-site. Whilst their presence will not interfere with your stay, we ask you to be considerate and respect their privacy.

Drug and alcohol policy

We would ask guests to familiarise themselves with and adhere to the behaviour and drug/alcohol policies contained within our [customer information document](#). Some centres may have specific licencing agreements in place in respect of the consumption of alcohol - please enquire with the centre directly for more information.

Entertainment

All of our centres hold a licence to play music, media & radio. If you intend to bring/hire in your own music/entertainment, please enquire with the centre directly for more information as a temporary events licence may be required.



[View a video of the local area](#)

www.field-studies-council.org/locations/castlehead/

Field Studies Council Castle Head
Grange Over Sands
Cumbria
LA11 6QT

Booking enquiries:
01743 852100
enquiries@field-studies-council.org

All other enquiries:
01539 538120
enquiries.ch@field-studies-council.org

Please contact us
and our friendly
team will be happy
to help plan your
stay.